



Overview Packet

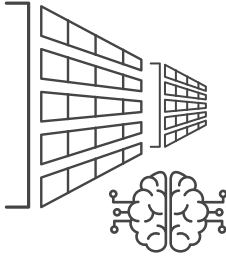


A WMS That Thinks Of You. Not The Other Way Around.

mobe3 isn't an improved WMS: it's something completely new, disruptive and powerful. Created by experts who have been developing and working with commercial-grade warehouse management software for over 15 years, mobe3 is a modern WMS that allows you to run your warehouse with confidence. Built like the mobile apps everyone knows and loves but designed with warehouse workflow in mind; mobe3 is second nature to use,

customizable and ERP-compatible. Do you have 50,000 transactions a day? No problem. This is industrial grade. Not a flimsy app. From the warehouse floor to the boardroom, get real-time insights, make the most efficient use of your space, and ensure no time or inventory is lost because your system couldn't keep up with your workflow or your workflow had to work around your system.





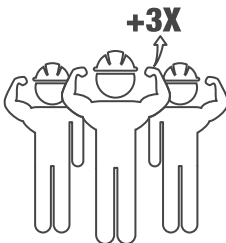
Smarter Inventory Management- *decrease the cost to fulfill orders by 25%*

- Attribute-based slotting based off criteria like allergens, temperature requirements, organic, kosher & more
- Complete traceability so you know where all your inventory is & where it's been
- Quality control holds
- Food safety support to keep you in compliance
- Real-time inventory views
- Eliminate error-prone manual process & paperwork



Drama-Free Integrations- *get up & running 3x faster*

- Connects directly to cloud-based ERP
- Out-of-the-box Sage X3 integration
- Built to easily integrate with your other warehouse technologies like TMS, MES, weigh scales, & robots



Supercharge Labor- *triple your employees' efficiency*

- Optimizes your warehouse layout & directs picking routes so more orders can be filled with fewer trips- allowing you to increase picks per hour by 300%
- Faster adoption & deployment because mobe3's native iOS platform looks & functions like the consumer tech products your warehouse workers use everyday
- Gain insights into key labor metrics to easily pinpoint areas needing improvement



Straightforward Pricing- *we want to be easy to do business with*

- Flexible pricing that is structured based on users to fit your needs
- Ruggedized iOS devices are easier to handle & more durable, requiring fewer repairs than traditional "industrial" scanners
 - Hardware costs fall from \$2,500 per device (industrial scanners) to \$700 per device (ruggedized iOS hardware)

Infrastructure

- iOS native app
- JSON Rest API
- SmartBarcodes
- Can connect to multiple ERPs
- Google Sheets integration

System Features

- Lot tracking
 - Lot attributes
 - Lot QC holds
- Serial tracking
- Bin tracking
 - Bin attributes
- Capacity by # pallet positions
- Item preferred bin
- Item preferred zone
- Jasper Reports
- Transaction history
- My tasks
- Alternate units of measure
- Camera integration
- FaceTime integration
- Warehouse maps & capacity matrix

Pallet Tracking

- Multiple items on a pallet
- Multiple lots/serials
- Pallet Move (bins & warehouses)
- Pallet load/unload
- Pallet move
- Directed put away logic
- Status flags
- Issue pallet to work order
- Receive finished goods onto pallet
- Issue pallet to pick list
- Pallet attributes
- Pallet on-hold

Inventory Management

- Item locator
- Move inventory (bin & warehouse)
- Adjust inventory with reason codes
- Ad hoc cycle counts
- Inventory slotting rules
- Bin replenishment
 - 1:1 relationship bin - replenishment
 - Zone based replenishment with min/max levels
 - Multi-step replenishment (pallet, case, each)
 - Directed put away can pre-empt bin replenishment
 - Custom scripting
 - Dynamic replenishment based on current orders
- Bulk bin move
- Kitting

PO Receiving

- Receive PO
- Item cross reference
- Directed put-away
 - (Scripting logic to optimize put away by zone, item attribute, bin attribute, picker attribute, etc.)
- Receive customer return
- Inbound load tracking
- Vendor performance
- Receive to pallet
- Print labels at receiving
- Receive transfer orders
- Cross-docking
 - (Scripting logic to optimize hierarchy)

Manufacturing

- Discrete work orders
 - Picking rules
 - Issue materials
 - Material reversal
 - Record labor
 - Receive finished goods
- Process manufacturing batches
 - Picking rules
 - Issue materials
 - Receive finished goods
 - Process conversion batch

SO Shipping

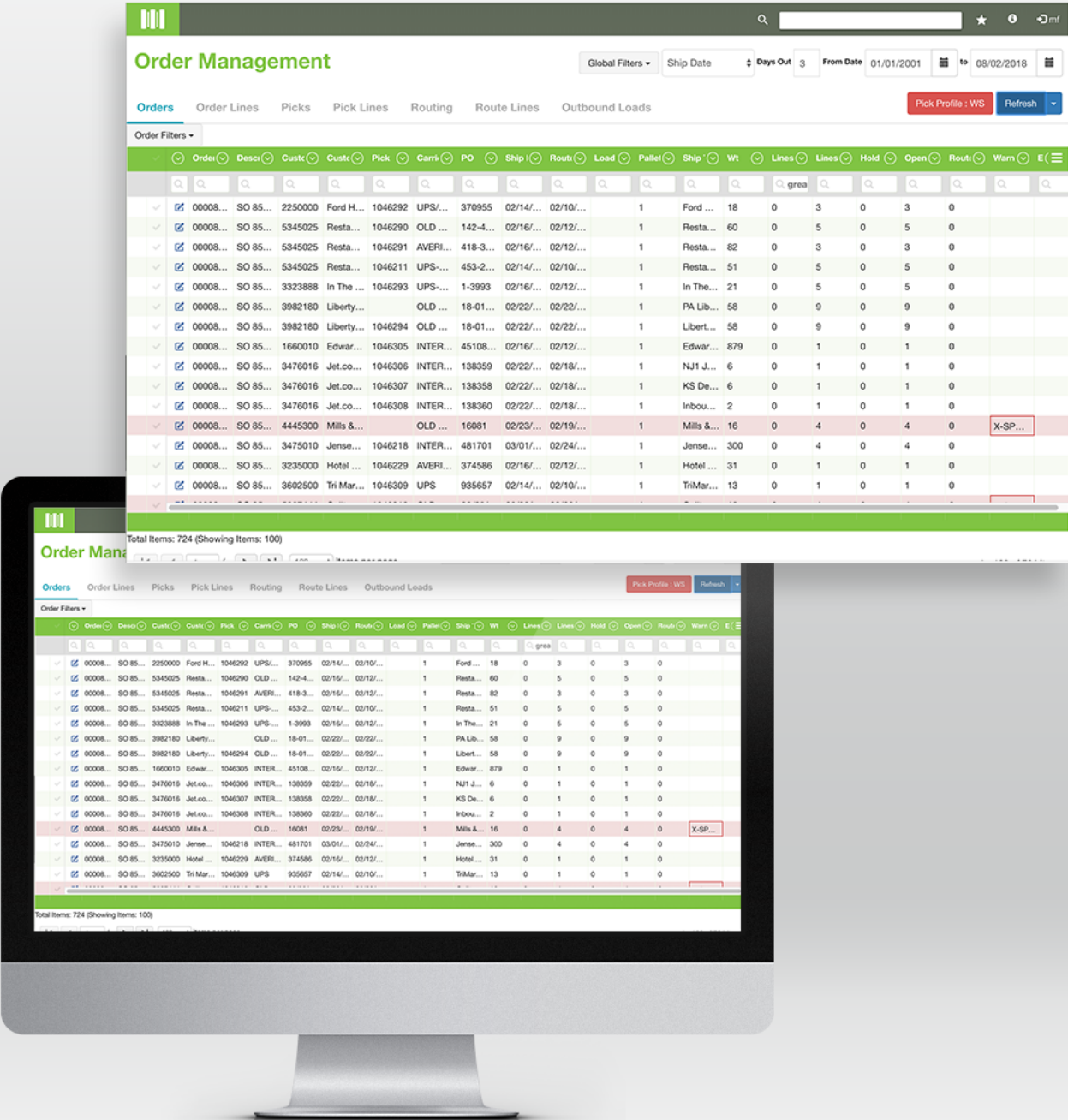
- Pick groups
- Pick manager
 - View open sales orders/lines
 - View open transfer orders/lines
 - Manually create pick lists
 - Manually assign picks to users
 - Manually assign packs to users
 - Combine picks
 - Print pick lists
- Web based Order Management screen
 - View open sales orders/lines
 - View open transfer orders/lines
 - Manually create / delete pick lists
 - Manually assign picks to users
 - Manually assign packs to users
 - Generate rule based pick waves
 - Identify overweight shipments
 - Split pick list & pick lines to new pick list
 - Combine picks
 - Print pick lists
 - Generate & print EDI UCC 128 labels
 - Generate ship load ID for dock scheduling
 - View picking progress
 - Picking optimization
 - Optimize picks assigned to pickers (Scripting logic to optimize put away by zone, item attribute, bin attribute, picker attribute, etc.)
 - Optimize eCommerce picks (Put Wall)
 - Optimize Sort & Segment picks
 - Optimize Cart Wave pick
 - Optimize Pallet Pick
 - Bulk pick consolidation to staging location
 - Suggest picks based on ordering rules
 - Pick Methods
 - Pick / pack / ship
 - Pick / ship (pallets)
 - Pack while you pick / ship
 - Pick staging
 - Shipping packages
 - Confirm picks
 - Pro# / Seal number tracking
 - Print shipping documents
 - Packing list
 - Bill of lading
 - Shipping labels
 - Dock scheduling

Inventory Counts

- Control numbers
- On the fly, Ad hoc control numbers
- Count administrator
 - Pause/Resume count
 - View counts
 - Reconcile counts
 - Post count variances
 - Print count sheets
- Post count variance directly to Sage 500

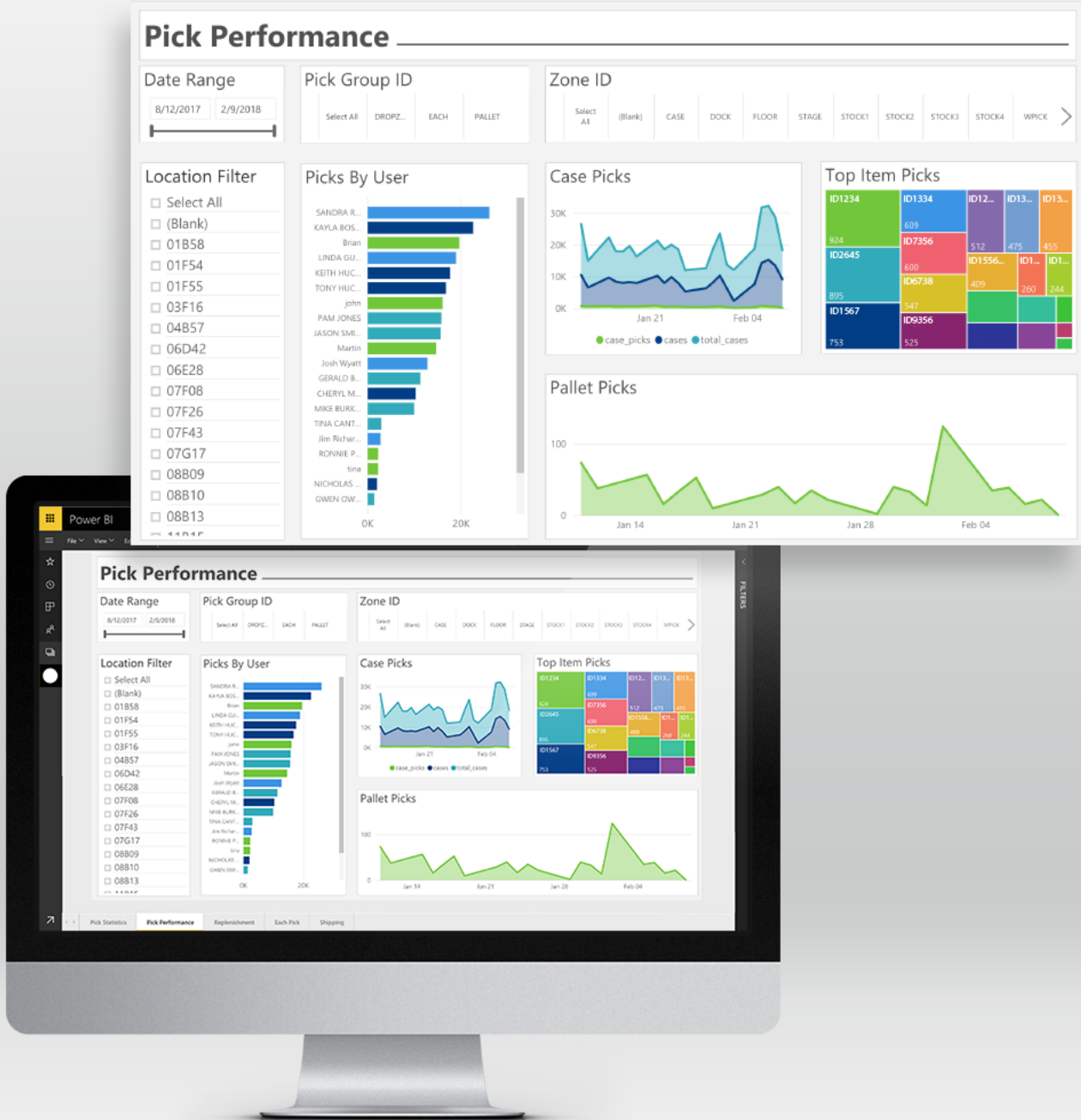
mobe3 Web

In addition to the mobile **mobe3 WMS**, you will also receive full access to our desktop version for all office and admin operations. From here, administrators will be able to create and assign picklists, assign shipping numbers, check inventory and more... all from the web.



Power BI

In a data-driven warehouse, analytics are paramount. Beautifully display your real-time key metrics and analytics with Power BI.



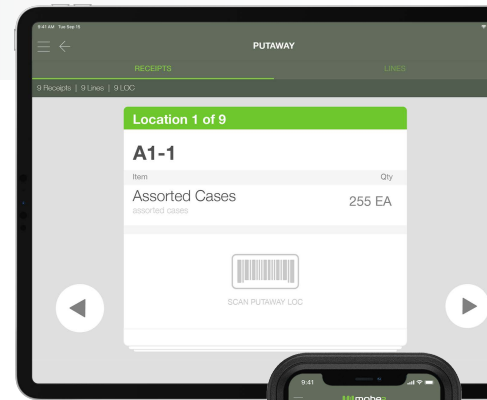
mobe3 FAQs

Which ERPs Does mobe3 WMS Integrate With?

mobe3 was designed for integration, and every function can be called by an API. Even legacy or non-traditional technology can integrate with mobe3 via simple flat file exchange. mobe3's current out-of-the-box integration list is continually growing, and currently includes Sage 500 (formerly Sage ERP MAS 500), Sage X3, SAP, Infor LN (BAAN), Sterland, and Computerway Food Systems (CFS).

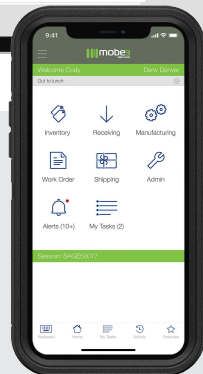
Does mobe3 Run On Any Devices Other Than iPhone & iPad?

The mobe3 management platform- used for functions like data analysis, order and pick management, and on-hand inventory reporting- is browser-based and can run on any platform. The mobe3 app runs exclusively on iPhone & iPad devices.



Do You Sell The Hardware?

We provide a regularly updated recommended Hardware Guide and have relationships directly with Apple as well as various hardware vendors to ensure your hardware selection process is easy and effective.



Is mobe3 WMS A Cloud Solution?

Yes- in fact, mobe3 is recognized by Gartner as one of two true cloud-only enterprise-class WMS solutions available on the market. mobe3 is delivered through the Microsoft Azure® cloud.



mobe3 FAQs

What Kind Of API Does mobe3 WMS Use?

RESTful JSON

Tell Me About Your eCommerce Shipping Module...

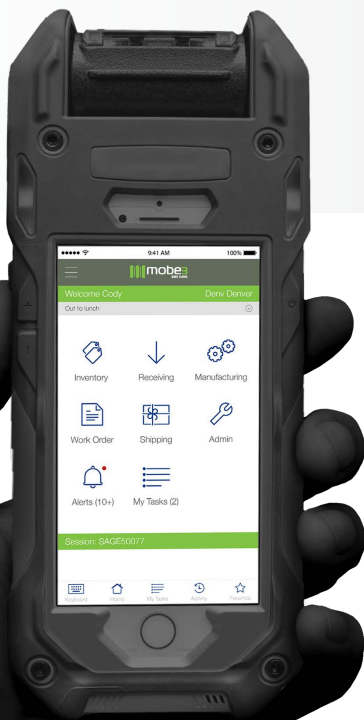
Whether shipping direct-to-consumer or via full (or less than full) truckloads, mobe3's *LaunchStation* module can help automate your entire fulfillment process.

LaunchStation comes with a standard label-generation integration and can easily integrate with all your other shipping technologies.

What Is Your Pricing Structure?

mobe3 pricing is a subscription-based model that's **\$250** per core concurrent user per month, with unlimited named users.

And yes, we do allow customers to add and remove flex user subscriptions on a month-by-month basis, as needed.



mobe3 FAQs

How Much Does An Implementation Cost?

Implementation costs depend on four things: the scope of the project, the complexity of the warehouse environment, the number of warehouse sites, and what internal resources you have available. Once we've established a clear understanding of your situation and needs, our consultants will provide an implementation estimate and specify 'not to exceed' investment perimeters.

How Long Does An Implementation Take?

The length of an implementation depends on the overall project scope and available customer resources.

FUN FACT: mobe3 WMS implementations are **3x faster** than the industry average.

Do You Provide Employee Training?

Yes. Employee training is part of mobe3's five-phase implementation approach: Project Initialization, Analysis & Discovery, Piloting & Gap Analysis, Training & End User Acceptance, Deployment & Go-Live.

Implementations typically include at least two on-site visits with mobe3 go-live experts, who work with your team to ensure they're fully trained and able to navigate the software with confidence.





www.evsrw.com/mobe3